

\$925,000 - 13876 Ravine Drive Nw, Edmonton

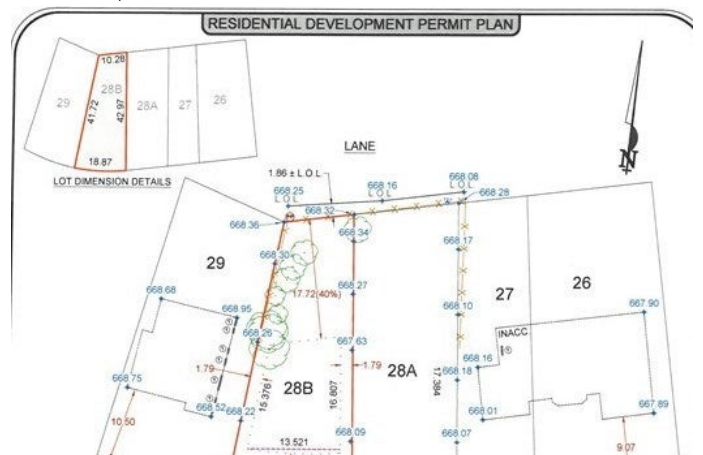
MLS® #E4267778

\$925,000

0 Bedroom, 0.00 Bathroom,
Single Family on 0 Acres

Glenora, Edmonton, AB

Fantastic south facing ravine view lot located on prestigious Ravine Drive. The lot size is 6631 SqFt located in Capital Hill, Glenora. The river valley is at your door step. Great opportunity to build your dream home. There is no home on the property: the house is a rendering.



Essential Information

MLS® #	E4267778
Price	\$925,000
Bathrooms	0.00
Acres	0.15
Type	Single Family
Sub-Type	Vacant Lot
Status	ACTIVE

Community Information

Address	13876 Ravine Drive Nw
Area	Edmonton
Subdivision	Glenora
City	Edmonton
County	ALBERTA
Province	AB
Postal Code	T5N 3Z9

Interior



Bedrooms on Main Level N

Exterior

Exterior Features Ravine View, River Valley View

Listing information last updated on January 27th, 2022 at 8:16am MST